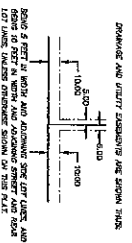
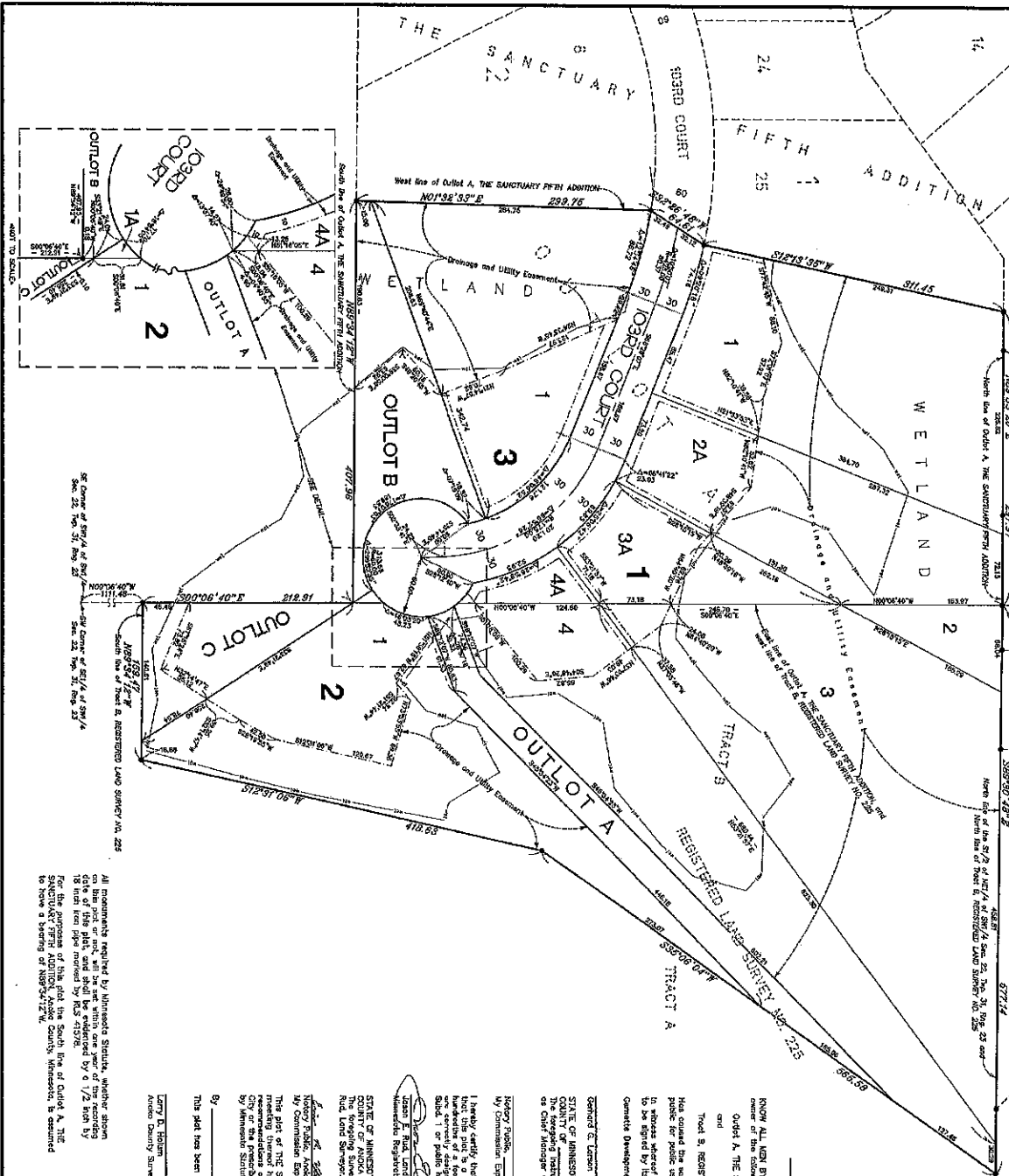


THE SANCTUARY SIXTH ADDITION

City of Blaine
County of Aroka
Section 22, T31, R23



NOTES:
1. Double 1/2" Round Iron Monument marked RLS #41378
2. Denotes Wet Line
3. Denotes Wet Land Line

KNOW ALL MEN BY THESE PRESENTS, That Genetica Development, L.L.C., a Minnesota limited liability company, the owner of the following described property situated in the State of Minnesota, County of Aroka, to wit:

Outlot A, THE SANCTUARY SIXTH ADDITION, Aroka County, Minnesota;

and

Tract B, REGISTERED LAND SURVEY NO. 225, Aroka County, Minnesota.

Has caused the same to be surveyed and platted as THE SANCTUARY SIXTH ADDITION and does hereby dedicate to the public for public use therein the streets and utility easements and such as shown on this plat.

In witness whereof said Genetica Development, L.L.C., a Minnesota limited liability company, has caused these presents to be signed by its proper officer this _____ day of _____, 20__.

Genetica Development, L.L.C.

Genetica Development, L.L.C.

Chief Manager

STATE OF MINNESOTA
COUNTY OF AROKA
The foregoing instrument was acknowledged before me this _____ day of _____, 20__ by Debra A. Larson, the Managing Director of Genetica Development, L.L.C., a Minnesota limited liability company, on behalf of the company.

My Commission Expires _____ County of Minnesota

I hereby certify that I have surveyed and platted the property described as this plat as THE SANCTUARY SIXTH ADDITION and that this plat is a correct representation of said survey and that all dimensions are correctly shown on this plat, in feet and hundredths of a foot, that all monuments will be correctly placed in the ground as shown, that the outside boundary lines are either 1" or public highways to be designated other than as shown on said plat.

State Land Surveyor
Minnesota Registration No. 41378

STATE OF MINNESOTA
COUNTY OF AROKA
The foregoing Surveyor's Certificate was acknowledged before me this 22nd day of March, 2002, by Jason E. Rud, Land Surveyor.

Jason E. Rud, Land Surveyor
Minnesota Registration No. 41378

This plat of THE SANCTUARY SIXTH ADDITION was approved by the City Council of Blaine, Minnesota at a regular meeting thereof held this _____ day of _____, 20__ and if approved, the written comments and recommendations of the Commissioner of Registration and the County Highway Engineer have been received by the City Council of Blaine, Minnesota on this _____ day of _____, 20__ and the same have been recorded by the County Register of Deeds, Section 22, T31, R23.

By _____ Mayor By _____ Clerk

This plat has been checked and approved this _____ day of _____, 20__.

Larry D. Holm
Aroka County Surveyor

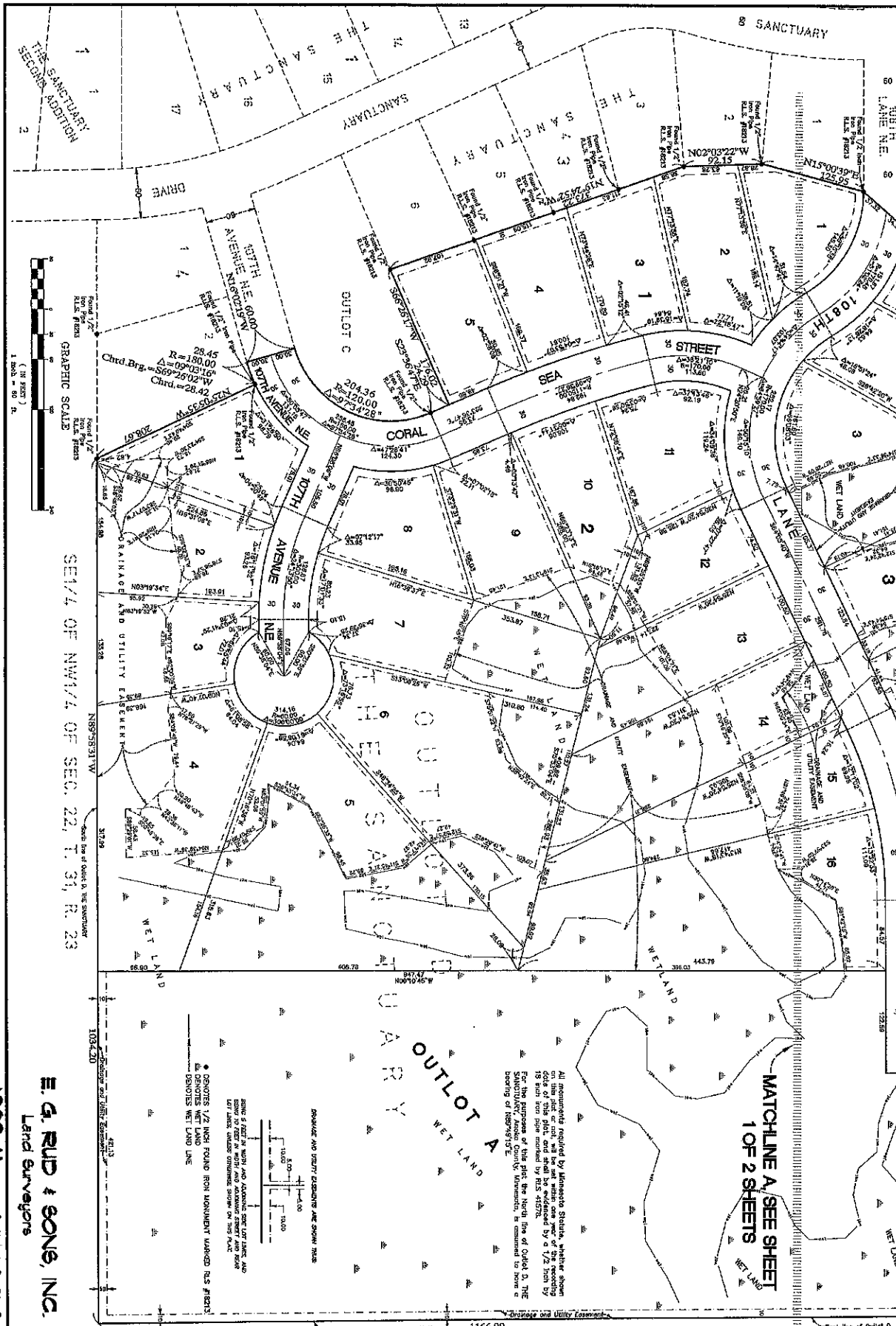
All monuments required by Minnesota Statute, whether shown on this plat or not, shall be established by a 1/2 inch by 18 inch iron pipe marked by RLS #41378.

For the purposes of this plat, the South line of Outlot A, THE SANCTUARY SIXTH ADDITION, Aroka County, Minnesota, is located to the 1/2 section of Section 22, T31, R23.

E. G. RUD & SONS, INC.
Land Surveyors
1888 G

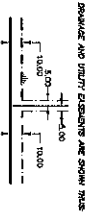
THE SANCTUARY EIGHTH ADDITION

City of Blaine
County of Anoka
Section 22, T. 31, R. 23



SE1/4 OF NW1/4 OF SEC. 22, T. 31, R. 23

MATCHLINE A, SEE SHEET
1 OF 2 SHEETS



• MONUMENTS 1/2" ROUND IRON MONUMENT MARKED "BEN'S"
• DENOTES WET LAND LINE

E. G. RUD & SONS, INC.
Land Surveyors

1888-H SHEET 2 OF 2 SHEETS

NW1/4 OF NE1/4 OF SEC. 22, T. 31, R. 23

